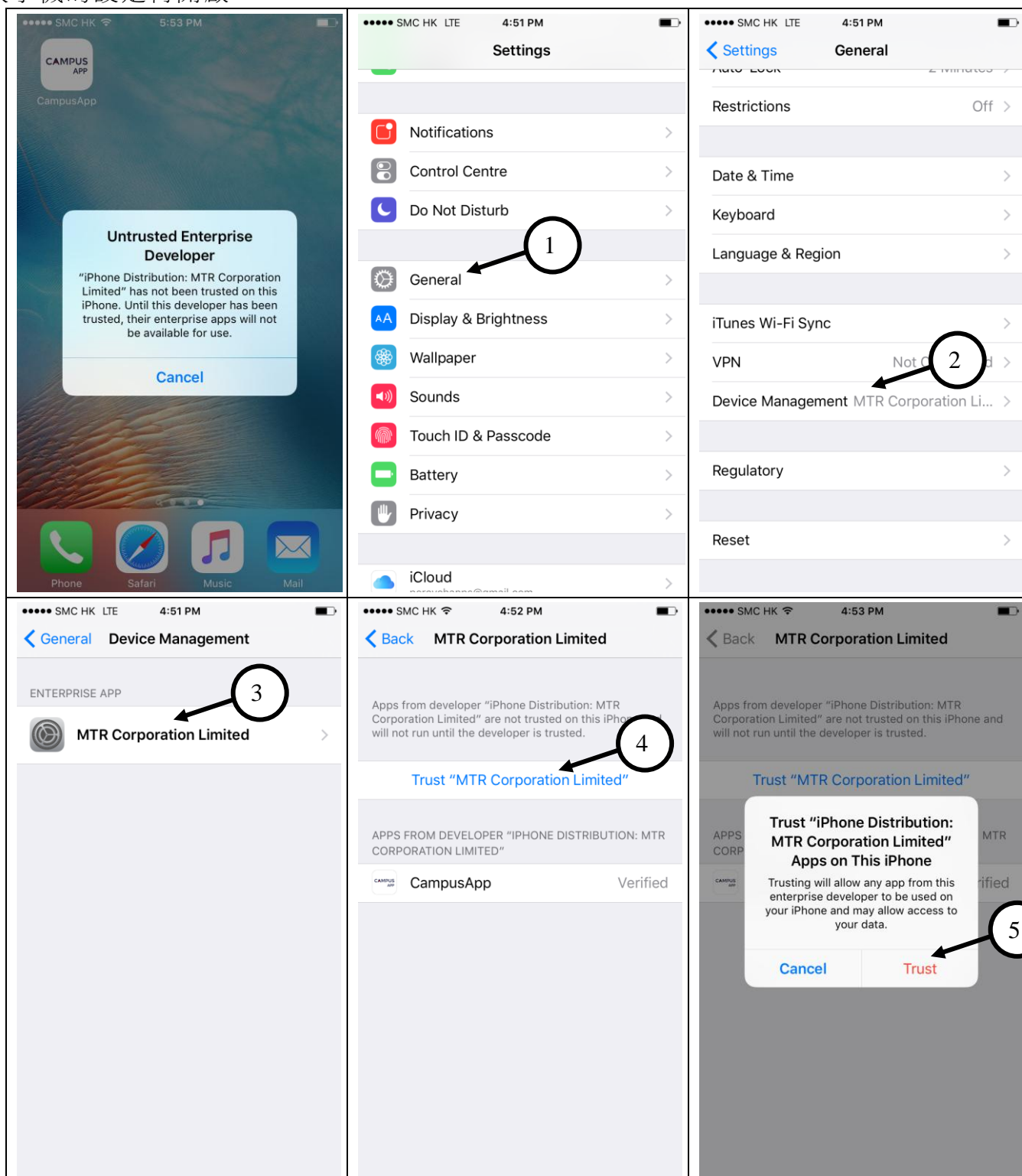


下載及首次開啟 CAMPUS APP 常見問題

Starting to use CAMPUS APP & FAQs

For user of IOS 9 or above (IOS 9 或以上的用戶)

Users may see the message in the first picture below when they download or start to use the CAMPUS APP. Please follow the steps in the following images and open CAMPUS APP again. 用戶在下載或首次開啟 CAMPUS APP 時可能會見到第一幅圖片顯示的信息，請依步驟更改手機的設定再開啟 CAMPUS APP。



For user of Android (安卓機的用户)

Users may see the message in the first picture below when they download or start to use the CAMPUS APP. Please follow the steps in the following images and open CAMPUS APP again.
用戶在下載或首次開啟 CAMPUS APP 時可能會見到第一幅圖片顯示的信息，請依步驟更改手機的設定再開啟 CAMPUS APP。

